

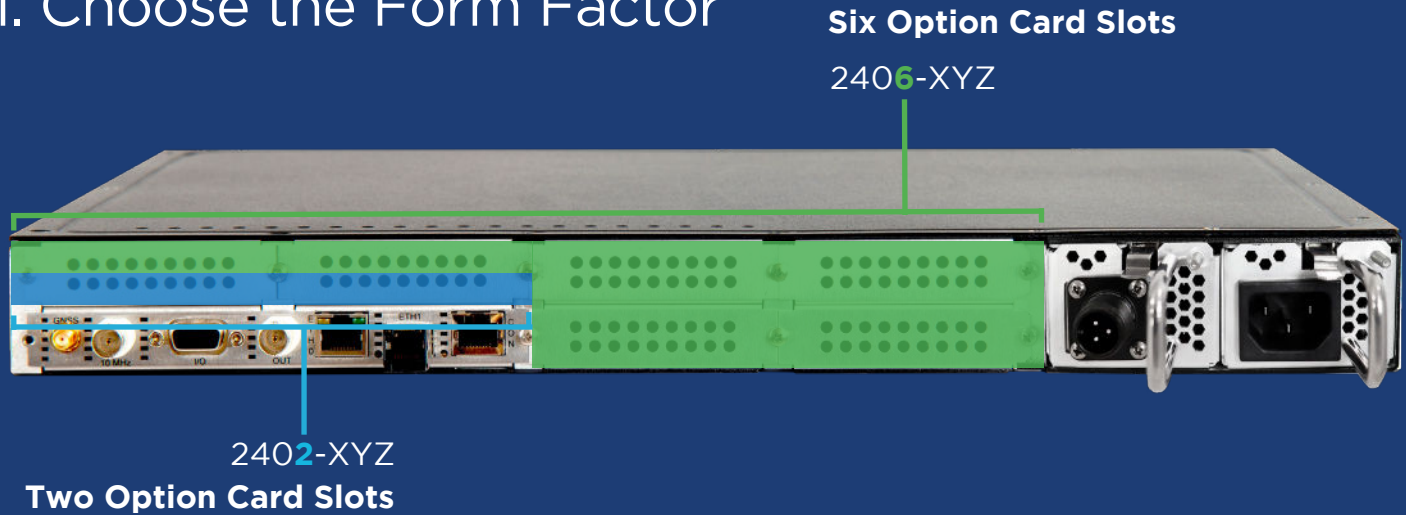
ELECTRONICS & DEFENSE



# BUILD YOUR OWN SECURESYNC 2400 MASTER CLOCK GUIDE



# 1. Choose the Form Factor



# 2. Select the Backup Oscillator

240W-XYZ	0 = TCXO	1 = OCXO	2 = OCXO LPN	3 = Rubidium	3 = Rub LPN
Accuracy to UTC (locked to GPS, @ 1 sigma)	±50 ns	±25 ns	±15 ns	±15 ns	±15 ns
Holdover (constant temp after 2 weeks of GPS lock)					
After 4 hours	12 µs	1 µs	0.5 µs	0.2 µs	0.2 µs
After 24 hours	450 µs	25 µs	10 µs	1 µs	1 µs
Signal Waveform & Levels: TTL (5 V <sub>P-P</sub> ), into 50 ohm, BNC					

# 3. Build the Power

Single Fixed Power
240W-XYZ
Populate the X with the a power option below: <b>0 = 100-240 VAC</b> <b>3 = 12 VDC</b> <b>4 = 24/48 VDC</b> Integral power supply, ships with line cord or mating connector
Hot Swap Power
240W-6YZ
Dual Hot-Swap requires ordering at least one power module, on top of power option 6 for the base unit. Order (1) or (2) of these power supply line items with the base unit, in any combination: <b>2400-HS-A1 = 100-240VAC</b> <b>2400-HS-D1 = 12 VDC</b> <b>2400-HS-D2 = 24/48 VDC</b>

Order Power Modules



## 4. Pick the I/O

### Expand Network Capacity



**1204-49 Dual Nic Option Card (SFP)**  
(NTP-Only Ports)



**1204-4A Quad Nic Option Card (SFP)**  
(NTP-Only Ports)

### Order Option Card(s)

- 2400 includes two Gbe Network ports on chassis (1) RJ-45, (1) SFP.
- Add additional network cards to increase processing capacity and the number of ports from 2 (Base) to 4, 6, 8, or 10 network ports in a single 1RU chassis.
- The ethernet ports of the base chassis unit provide NTP, PTP, and Management capabilities.
- Field upgradeable.



Order  
SFP-Copper  
Module(s)

## 5. Add NENA Compliance



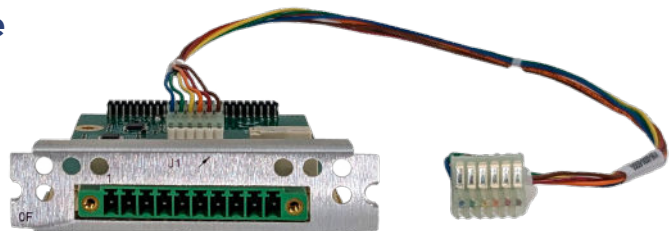
**CA08R-0000-0010 NENA Breakout Cable**

- IRIG Out (BNC)
- ASCII RS-232 OUT (DB9F)
- ASCII RS-485 OUT AND Relay/Alarm\* OUT (Terminal Block)

*\* Requires 1204-0F installed*

*With these options installed, SecureSync meets NENA Master Clock spec: NENA-STA-026.5-2016 and offers compatibility to synchronize legacy Spectracom TimeView Display Clocks over RS-485 Terminal Block. For more information on set up of these options, see SecureSync2400\_NetClock\_Option\_Guide\_rev1*

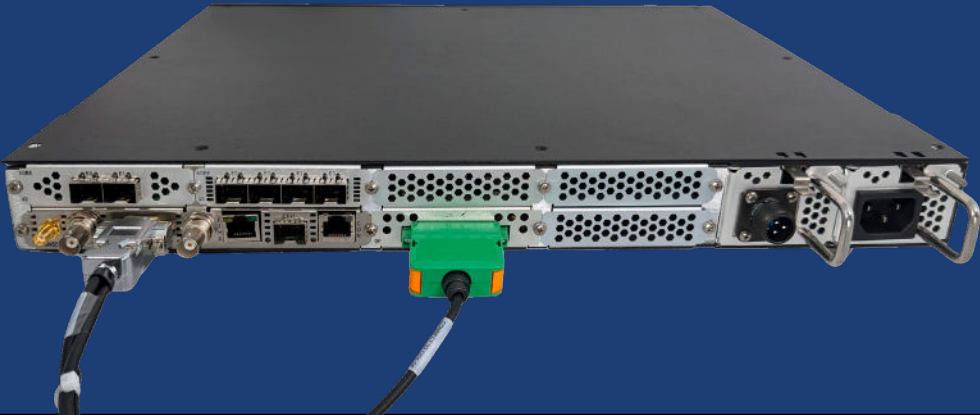
### 1204-0F Alarm Relay Option Card





**Example Configuration**

- (1) SecureSync 2406-613
- (1) 2400-HS-A1
- (1) 2400-HS-D2
- (1) 1204-4A
- (1) 1204-49
- (1) CA08R-0000-0010
- (1) 1204-0F



**6. Add on the Accessories**

**Antenna**



8230

**Anti-Jam Antenna**



8230AJ

**Surge Protector**



8226

**Inline Amplifier**



8227

**Flat Roof Antenna Base**



8213

**Flat Roof Antenna Base**



8213

**Grounding Kit for Surge Protector**



8226-0002-0600

**Antenna Splitter**



8224

**Ruggedized Antenna Bracket**



ANT-KT

**Antenna Post Mast**



8235

**Antenna Coax Cable**



CA01-0N0N-3xxx

**SecureSync Breakout Cable**



CA08R-D500-0001

[safran-navigation-timing.com](http://safran-navigation-timing.com)



**Buy Now**



Safran Electronics & Defense may, at any time and without notice, make changes or improvements to the products and services offered and/or cease producing or commercializing them.